

The LERU Roadmap and the potential for Open Data

Dr Paul Ayris

Director of UCL Library Services and UCL Copyright Officer
Chief Executive, UCL Press

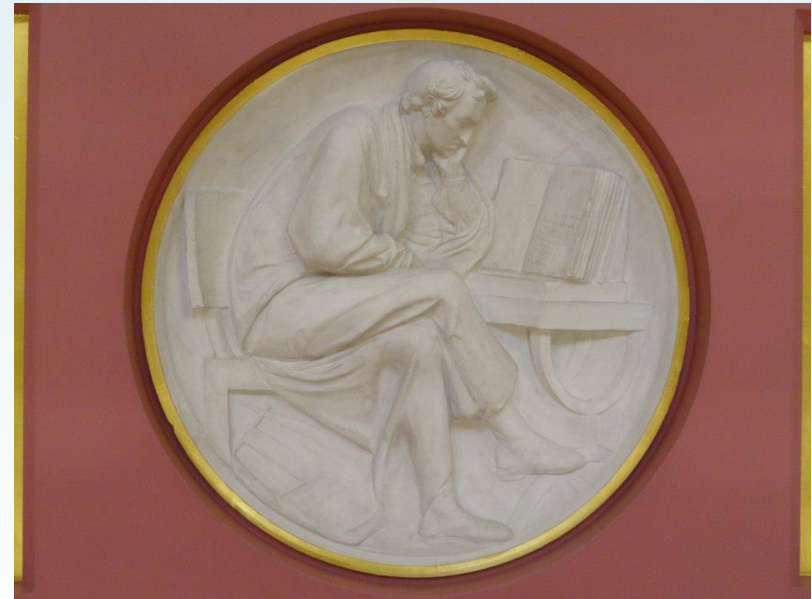
Co-Chair of the LERU community of Chief Information Officers
Adviser to the LIBER Board on Horizon 2020 and EU issues

e-mail: p.ayris@ucl.ac.uk



Content

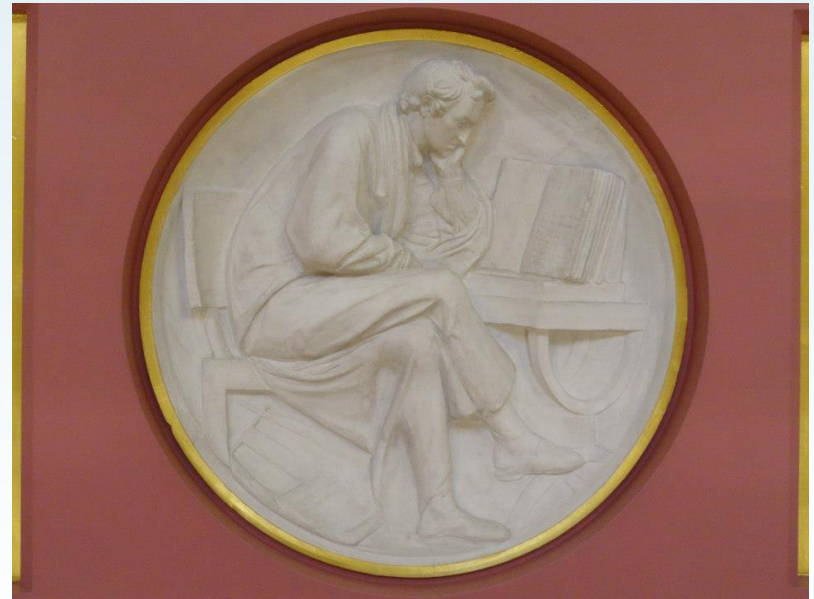
- Research Data Management
 - LERU Roadmap
 - Open Data
- LEARN
- Conclusions



Plaster Relief by John Flaxman,
Flaxman Gallery, UCL

Content

- Research Data Management
 - LERU Roadmap
 - Open Data
- LEARN
- Conclusions

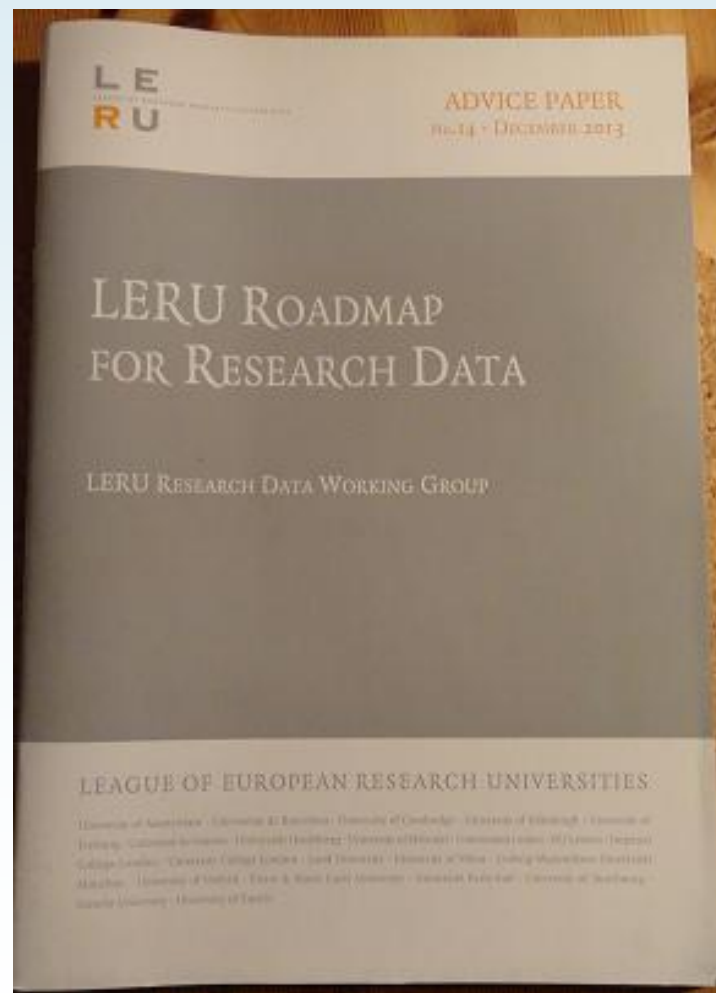


Plaster Relief by John Flaxman,
Flaxman Gallery, UCL

LERU Roadmap for Research Data

☐ Overseen by Research Data Working Group

- Pablo Achard (University of Geneva)
- Paul Ayris (UCL, University College London)
- Serge Fdida (UPMC, Paris)
- Stefan Gradmann (University of Leuven)
- Wolfram Horstmann (University of Oxford)
- Ignasi Labastida (University of Barcelona)
- Liz Lyon (University of Bath)
- Katrien Maes (LERU)
- Susan Reilly (LIBER)
- Anja Smit (University of Utrecht)



Policy and Leadership

- Identifies how policy development and leadership are undertaken

Advocacy

- Who undertakes advocacy and what is the message?

Selection, Collection, Curation, Description, Citation, Legal Issues

- Technical Issues around collection and curation

Research Data Infrastructure

- Where is it stored and by whom?

Costs

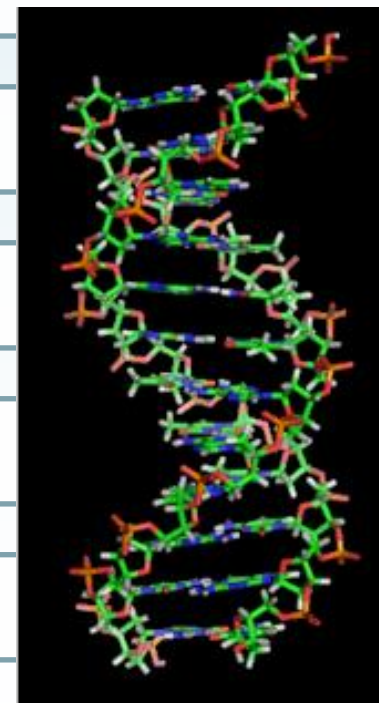
- How much does it cost?

Roles, Responsibilities, Skills

- What skills are required by which communities?

Recommendations to different stakeholder groups

- Who does what?



Key Messages

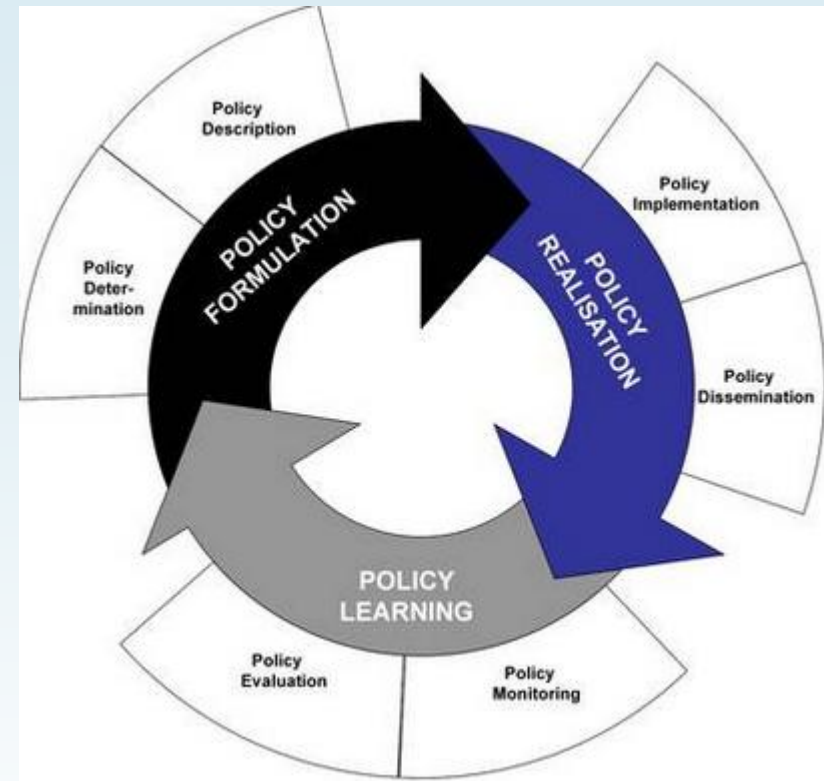
- ❑ Each LERU university needs a Research Data Management Strategy
- ❑ Researchers should have Research Data Management Plans
- ❑ LERU universities need to bring stakeholders together
- ❑ Benefits of 'open data' for sharing and re-use should be advocated and explored



A Box of Useful Knowledge
(Brougham Papers, UCL Library Services)

Policy Development

- Case Study on Policy development from UCL
- Drivers
 - External funders
 - Need to inform researchers
 - Raise awareness of issues facing UCL researchers
- Identifies roles and responsibilities
- Data to be made open in the most open manner appropriate



See www.lanecrothers.net/politicalprof/the-policy-cycle-and-our-frozen-politics/

- Researchers should have Data Management Plans
- LERU slams lack of data policies – *Research Europe*

Open Data

- Open Data allows research data to be shared and re-used
 - Avoids costly duplication of research activity
 - Provides greater transparency in research activity
 - Potential to speed discovery of solutions to societal Grand Challenges, such as health care & environmental science

- Can all research data be open?
- Certain categories probably cannot
 - National security
 - Data protection
 - Commercial Funder requirements

http://en.wikipedia.org/wiki/File:Open_Data_stickers.jpg



Content

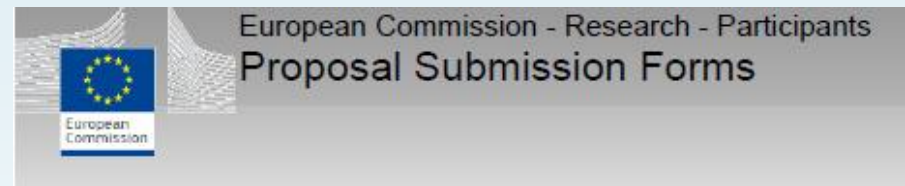
- Research Data Management
 - LERU Roadmap
 - Open Data
- LEARN
- Conclusions



Plaster Relief by John Flaxman,
Flaxman Gallery, UCL

LEARN – LEaders Activating Research Networks

- ❑ Purpose is to develop the [LERU Roadmap for Research Data](#) to build a global co-ordinated global e-infrastructure
- ❑ Outputs
 - ❑ Model Research Data Management policy
 - ❑ Toolkit to support implementation
 - ❑ Executive Briefing in five core languages so as to ensure wide outreach



Horizon 2020

Call: H2020-INFRA SUPP-2014-2

Topic: INFRA SUPP-7-2014

Type of action: CSA

Proposal number: 654139

Proposal acronym: LEARN

LEARN

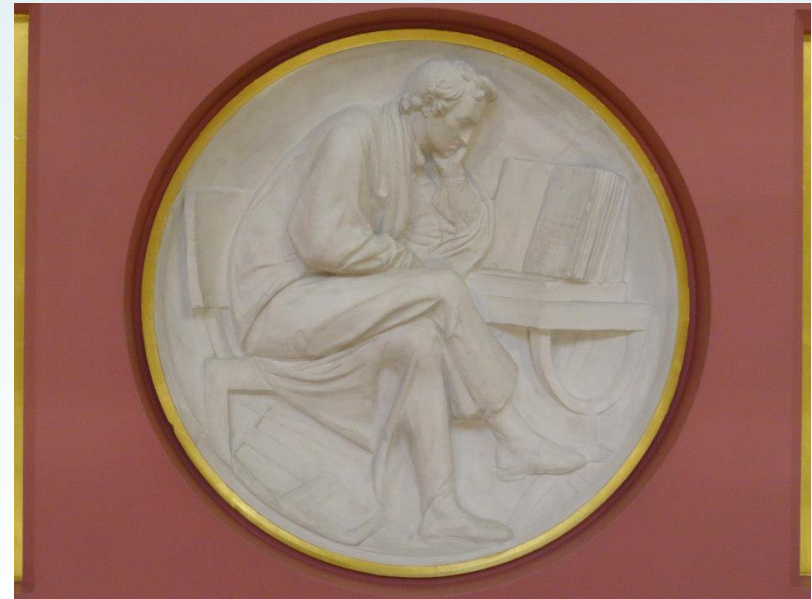
- ❑ 5 partners
 - ❑ UCL (University College London) – lead partner
 - ❑ University of Barcelona
 - ❑ University of Vienna
 - ❑ LIBER
 - ❑ ECLAC – UN Commission for Latin America and the Caribbean
- ❑ Started in June 2015; runs for 24 months
- ❑ €497,000 budget
 - ❑ 100% funded



Wilkins Building, UCL, 1826

Content

- Research Data Management
 - LERU Roadmap
 - Open Data
- LEARN
- Conclusions



Plaster Relief by John Flaxman,
Flaxman Gallery, UCL

3 Questions and possible Solutions from LEARN

1. Supporting Institutions, Funders

- LEARN to produce model RDM policies and supporting Toolkit
- LEARN to raise awareness amongst all stakeholder communities

2. Open Data

- Need to build trust among communities who have no history of sharing data
- Embargoes or Exceptions*
 - Which will build trust to ensure primacy of use?

3. What does RDM cost?

- Urgent need for costing models/case studies

