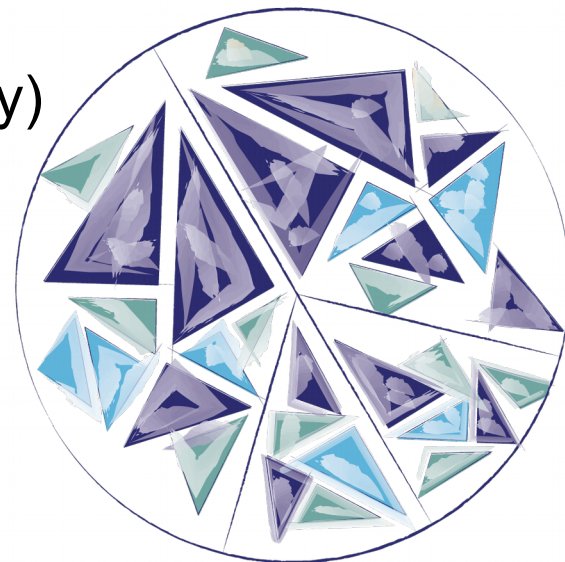


Research Data Alliance Practical Policies for Data Management Adoption

Platform for Experimental,
Collaborative Ethnography (PECE)
RPI, Troy, NY, USA

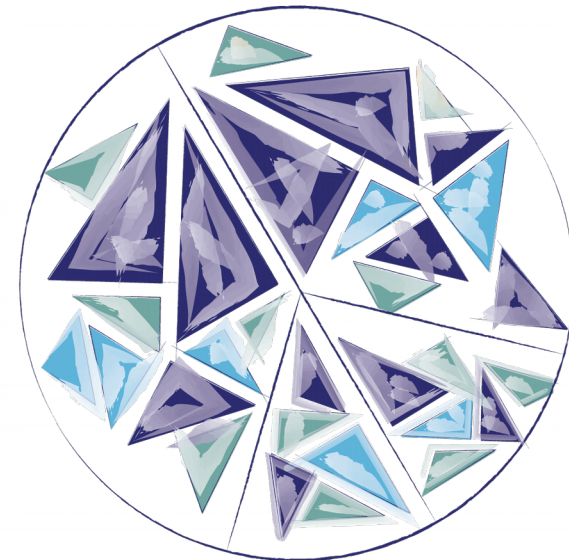
Luis Felipe R. Murillo
(Berkman Center for Internet and Society)

Research Data Alliance – 6th Plenary
Paris, September, 23, 2015



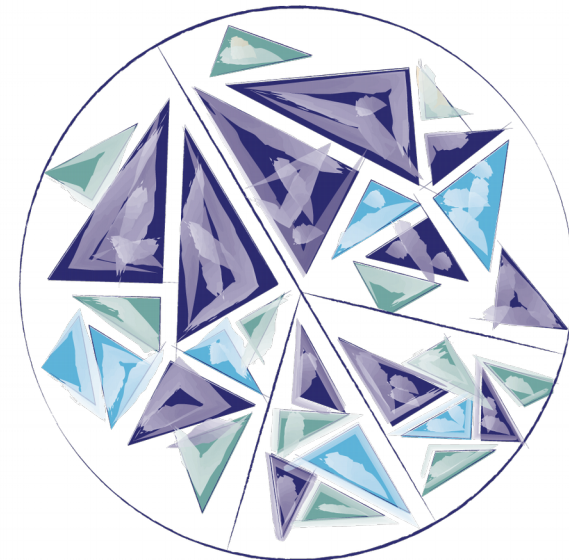
What is PECE?

- **Primary Goal:**
Provide a platform for data sharing and collaborative, interpretive (hermeneutic) analysis of ethnographic and historical data
- **Developed by an interdisciplinary team**
primarily located at **Rensselaer Polytechnic Institute**, Troy, New York
- **Pilot Projects:**
The Asthma Files
Disaster STS research network
Astroanthro.net



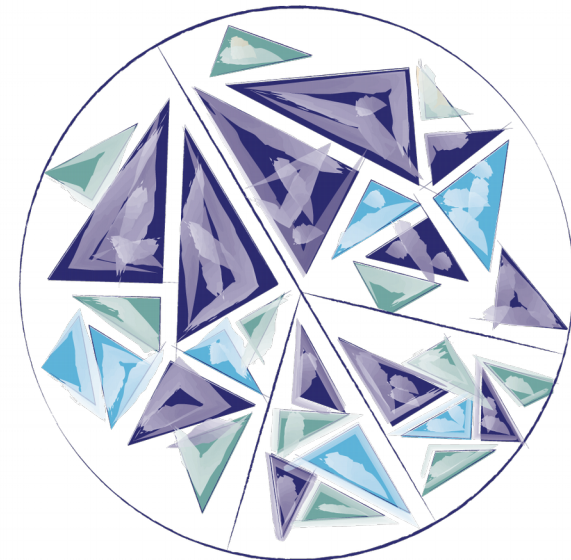
PECE + RDA

- **PECE researchers** are also active **RDA members**:
 - *Digital Practices in History and Ethnography Interest Group*
 - *Empirical Humanities Metadata Working Group (pending)*
- **We are working on the adoption of the following RDA WG outputs**:
 - *Practical Policy Working Group*
 - *PID Collections Working Group (planned)*



PECE Design: Working Tensions

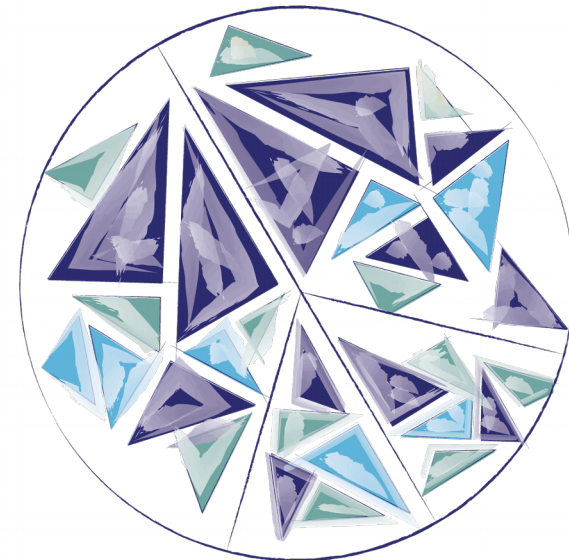
- **Collaboration:** *support the different interpretations from diverse body of researchers, research collaborators, and the public of any given data set*
- **Technical and Domain-Grounded Innovation:** *Making the platform innovative while driven by domain practice and theory (enabling new forms of ethnographic work and dissemination)*
- **UI and UX:** *support ways of visualizing heterogeneous types of data, working with legacy interpretations as/of data and producing experimental literary forms*



RDA Practical Policies WG

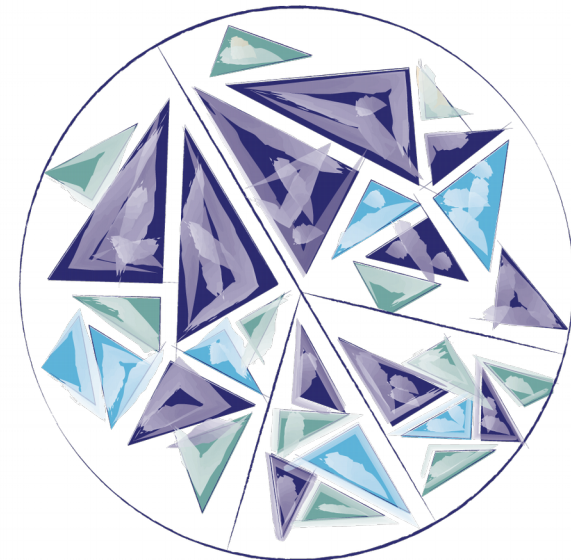
Output: 11 computer-actionable data management policies

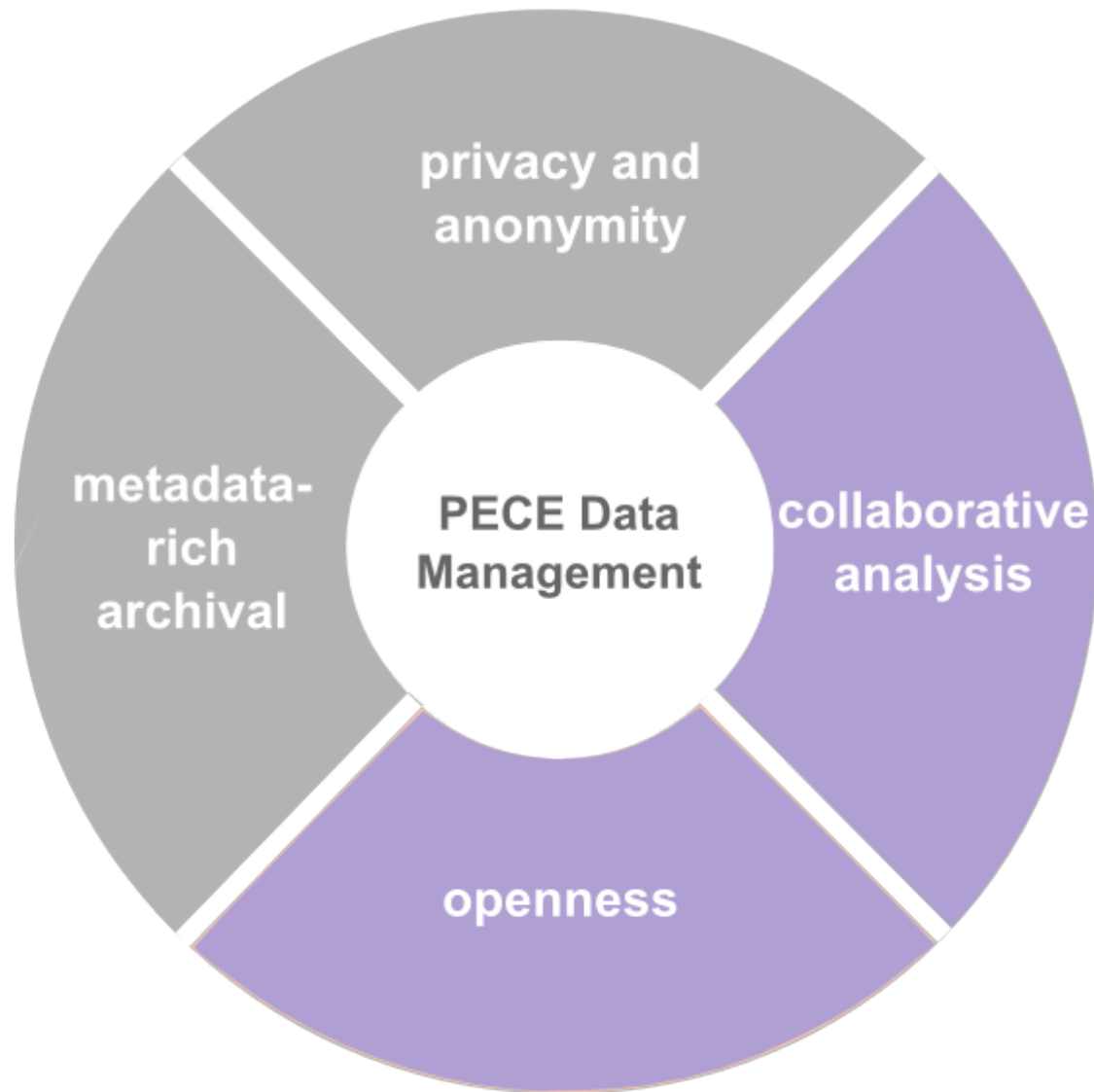
- *Contextual metadata extraction*
- *Data access control*
- *Data backup*
- *Data format control*
- *Data retention*
- *Disposition*
- *Integrity (including replication)*
- *Notification*
- *Restricted searching*
- *Storage cost reports*
- *User agreements*



Data Management for Humanities: Implementation Challenges

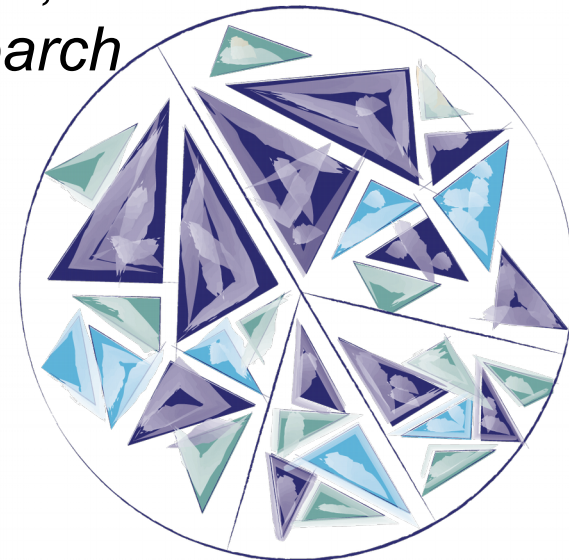
- **Data Protection:** *sharing ethnographic data involves complex ethical and privacy concerns*
- **Enhancing Collaboration:** *enabling collaborative analysis and discovery without having a fixed data model and over-structuring user experience on the platform*
- **Multi-field expertise:** *need for more scholars who bridge the domain of computing with research in humanities and social sciences*



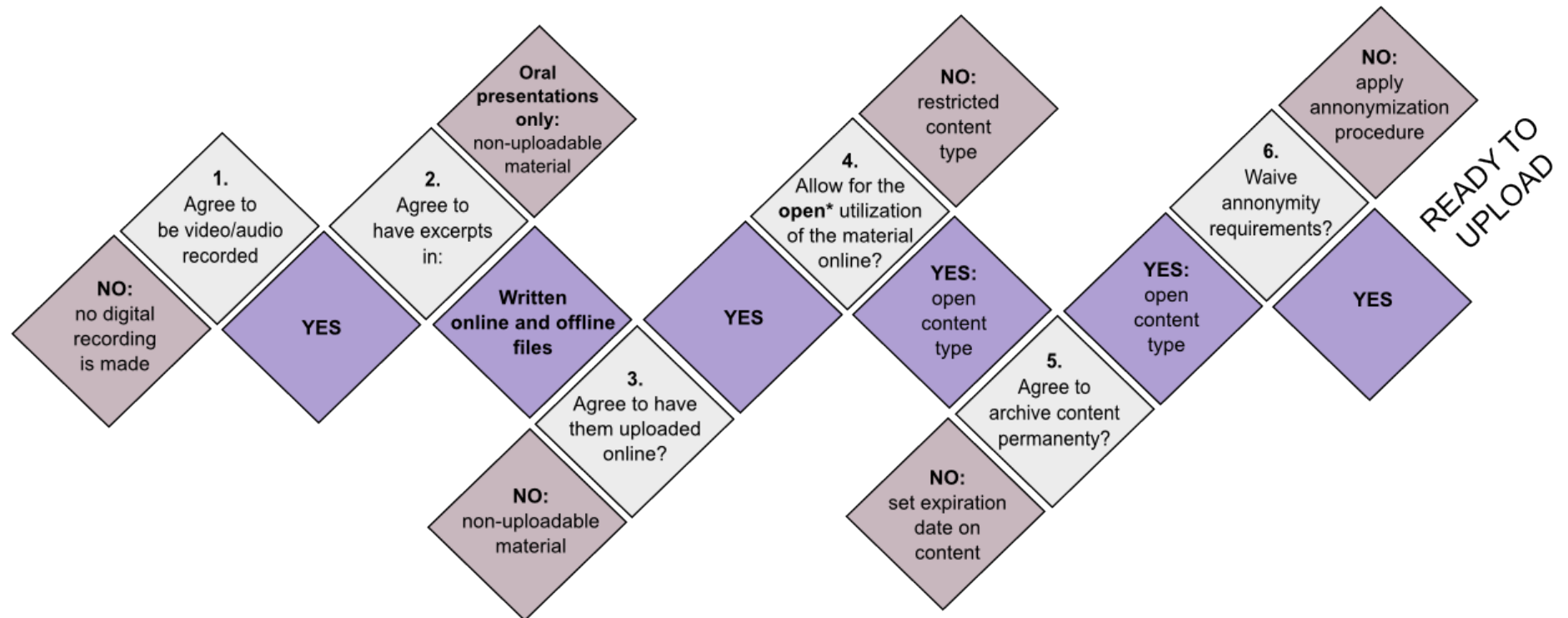


PECE Data Management

- **Contextual Metadata Extraction:**
PECE Open API
- **Data Access Control:** *role-based permission system and permissions per digital object*
- **Data Format Control:** *only open formats and standards are allowed in the platform*
- **Backup:** *automated, redundant, and encrypted*
- **Restricted Searching:** *based on user roles, easy to remove a digital object from the search index, distributed ElasticSearch*
- **User Agreements:** *prepared with the Cyberlaw clinic of the Berkman Center at Harvard*
- **And more...**



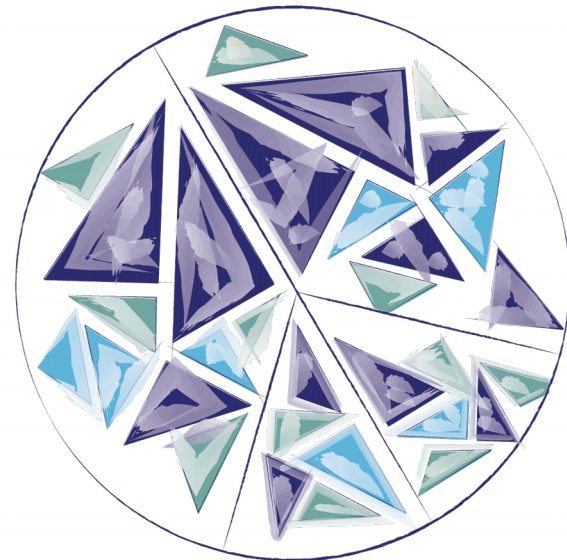
Institutional Review Board (IRB) informed consent form questions translated into PECE permission system



Open* means content released with the standard PECE license:
Creative Commons Attribution-Sharealike 4.0 International

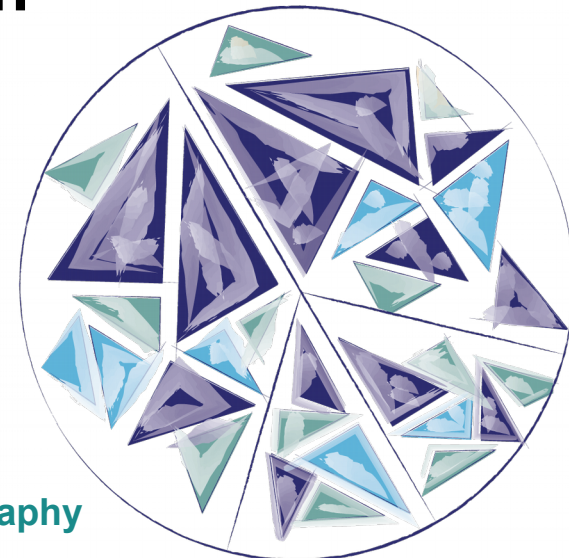
Planned Features of PECE 2.0

- **New features:**
 - *Real-time, collaborative writing*
 - *Embedded metadata for binary files*
 - *Cryptography for sensitive data*
 - *WebRTC support for audio/video interviews and group meetings*
 - *Online IRB consent form, permission settings by research subjects*
 - *Micro-attribution through content versioning*



Contact us!

- Luis Felipe R. Murillo
lfmurillo@cyber.law.harvard.edu
- Download the **PECE Data Management Practical Policies report** (v.0.9) at the RDA file repository
- Find us at the **adopters' poster session**
- We are **looking for collaborators**



platform for collaborative, experimental ethnography