



Metadata Standards Directory

**Alex Ball, Jane Greenberg, Keith Jeffery,
Rebecca Koskela**

research data sharing without barriers
rd-alliance.org

■ What is the problem?

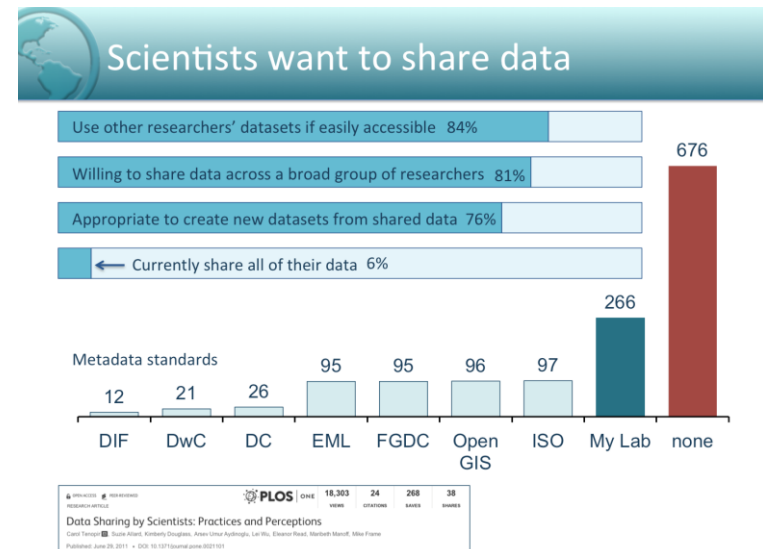
A common challenge, when working with research datasets, is the information within them is often difficult to identify, contextualize, interpret and use due to the inconsistent approaches in applying related metadata, or metadata schemes. To fully understand the content within datasets, researchers need metadata that clearly describes, explains, and associates the dataset with various other entities.

■ Impact

- Data Management Plan requirements
- Interoperability
- Data managers/curators

■ What are the ramifications of not having the problem resolved?

- Proliferation of “standards”
- Obstruct interoperability
- Adoption of inappropriate standards leads to inability to:
 - Utilize for research purposes
 - Preserve/curate
 - Connect datasets to software



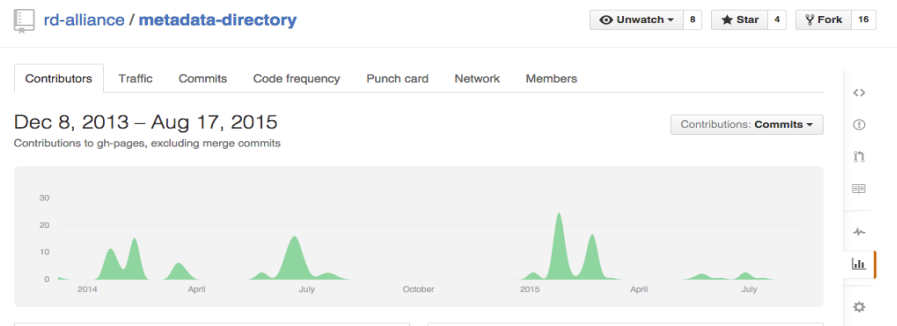
- Metadata Standards Directory WG
 - 135 members
 - Representing multiple disciplines (Environmental Science, Geology, Bioinformatics, Libraries, Computer Science, etc.)
 - Multiple countries represented (US, UK, Finland, Italy, France, etc.)
- Deliverables:
 - Directory of descriptive, discipline-specific metadata standards to:
 - Promote the discovery, access and use of standards
 - Improve the state of research data interoperability and reduce duplicative standards development work
 - Expanded and updated the DCC Metadata Catalogue
 - Website to add or correct standards
 - Collection of use cases

Impact of the Deliverable

- The DCC directory has led to some groups in Europe adopting
 - DCAT (various groups)
 - INSPIRE (various projects using European Space Agency data)
 - Darwin Core (some university bio departments)
 - SDMX (some social science departments – statistical metadata standard)
 - DDI (some universities linked to UKDA (UK Data Archive))
- Promote the discovery, access and use of standards
- Improve the state of research data interoperability and reduce duplicative standards development work
- Enable researchers to
 - Learn about standards applicable for their research
 - Learn about controlled vocabularies in their community and the elements that comprise these standards and vocabularies
 - Map between elements when combining data from different sources

Endorsements/Adopters

- Who are the adopters and how have they used the deliverable?
 - UK Digital Curation Centre (DCC)
 - 18,339 page views 1 January -16 September 2015
 - Data Observation Network for Earth (DataONE)
 - Included in Best Practices Database
 - ~16,500 users/quarter and ~20,250 sessions/quarter
- GitHub Use to Update DCC Directory



- Reiterate who could use this deliverable
 - Researchers to find appropriate metadata to make their datasets available, discoverable, interoperable, and curatable
 - Data managers / librarians for creating local standards for researchers in their jurisdiction
 - Go beyond just 'dumping' the metadata specification
 - Requires contextual metadata to explain context in which it can be used
 - And appropriate scripts for downloading/implementing and APIs for interoperation
- Provide instructions on how to access and use them

- Next Step: Metadata Standards Catalog
 - <https://rd-alliance.org/groups/metadata-standards-catalog-working-group.html>

- Please join:
 - Metadata Standards Catalog WG
 - Metadata IG

- Contacts:
 - Keith Jeffery
 - Rebecca Koskela